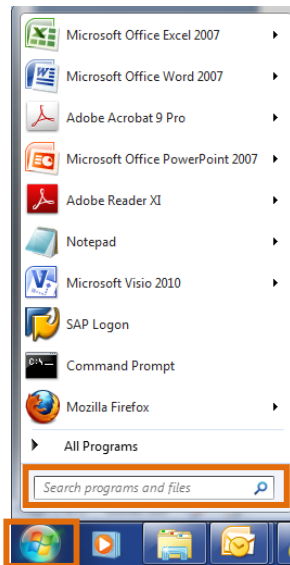


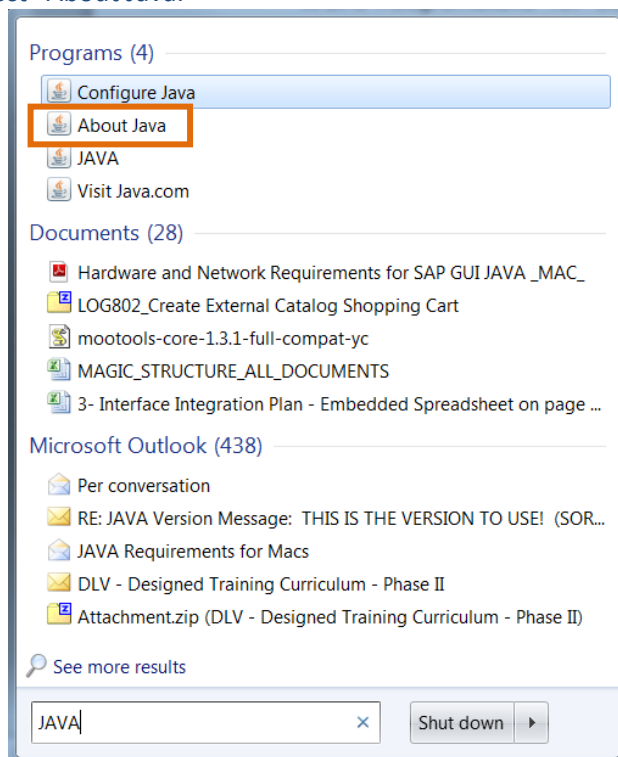
## Checking Java Version for MAGIC Requirements

If you do not see the options described below, please contact your IT Department for help in determining your software version.

You can check your JAVA Version by clicking on the WINDOWS START button. Type “JAVA” in the Search Programs and Files box.



Select “About Java.”



You'll see a screen similar to this.



If you do not see “About Java” after typing “JAVA” in the Search Programs and Files box, hover your cursor over the Java.exe icon to see the Java version.

