



# Business Process Flowchart

## Inter Agency Billing

### Packet Description

The Inter Agency Billing Packet provides information on Inter-agency sales orders, invoices, billing for goods and services in MAGIC.

### MAGIC Roles

The MAGIC Roles used in these flows are:

- SD - Sales Distribution Billing Administration
- SD - Sales Distribution Sales Order Administration
- SD - Sales Distribution Pricing Conditions Administration
- SD - Sales Distribution Sales Customer Contacts
- IO - Internal Order Reports & Display
- CO - Cost Center Reports & Display
- CO - Cost Center Accountant
- AR - Invoice Entry
- AR - Invoice Approver

A description of each role can be found on the [MMRS Website](#).

### MAGIC Flows

The individual MAGIC flows that are included in this packet are:

- External Invoice through Sales and Distribution
- Invoicing through Sales and Distribution
- Sales and Distribution - Master Data Maintenance
- Cost Allocations

### Help or Questions

Click [here](#) to learn how to read a MAGIC Business Flowchart.

If you have a question, please use the [MAGIC Feedback](#) webpage to submit your question.



## Business Process Flowchart

---

### Inter Agency Billing

#### Significant Changes

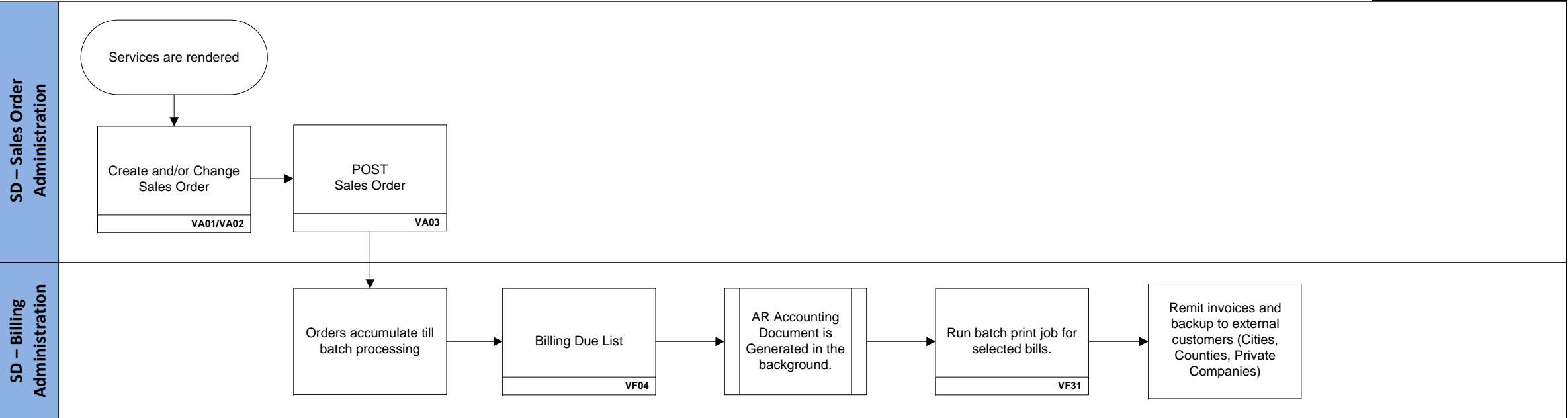
- MAGIC will have a central customer file with centralized customer numbers.
- MAGIC provides stronger processes for aging receivables and for collections.
- MAGIC will provide more functionality for generating invoices.



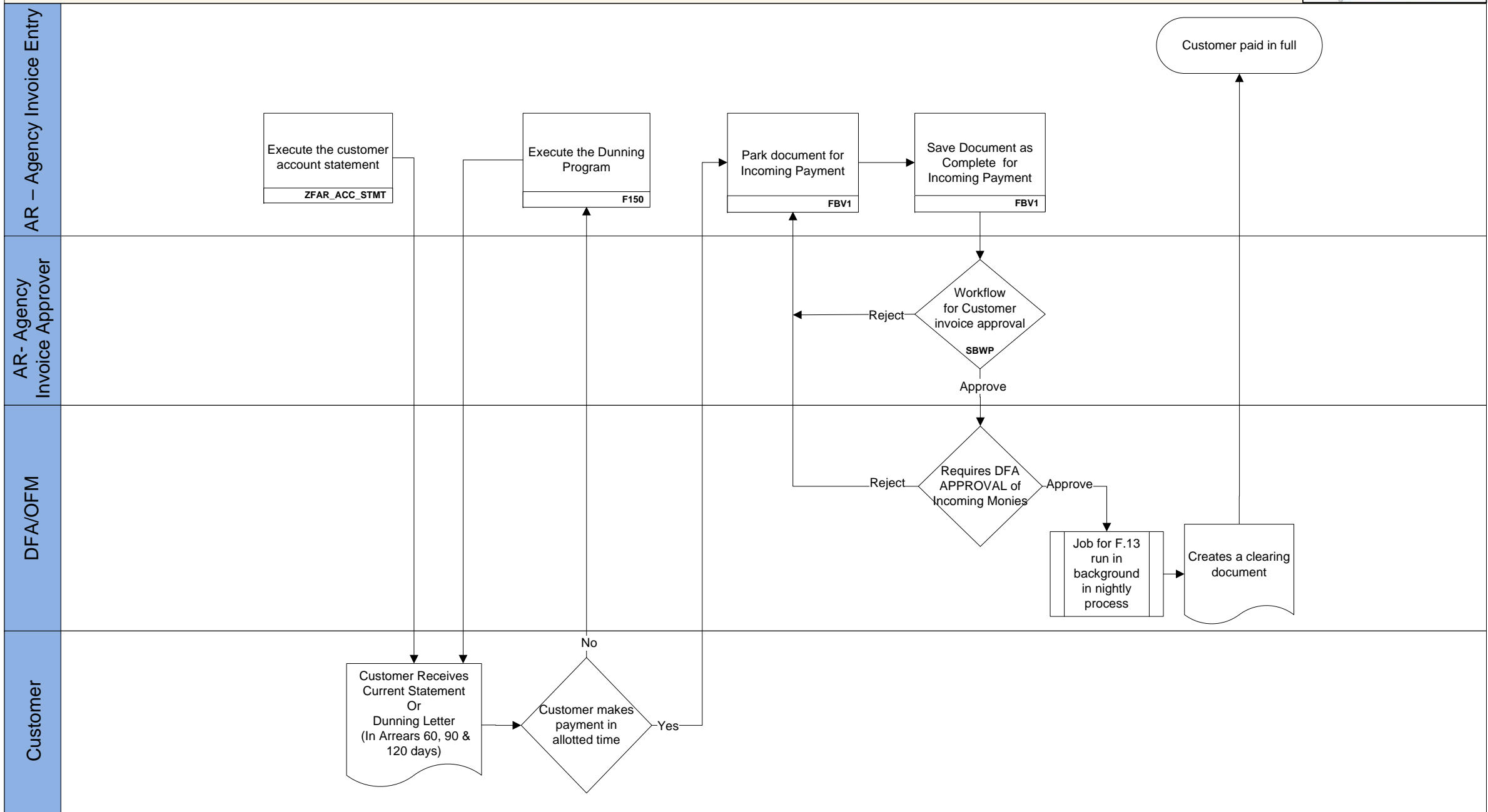
#### High Level Process Description

- The simplified flow for Inter-Agency billing is:
  - Billing Agency (vendor) creates a sales order assigned to the Customer Agency (customer) and generates the billing document.
  - MAGIC generates the necessary accounting entries by way of accounting documents.
  - Customer Agency (customer) creates a payable to the Billing Agency using the vendor invoice functionality, and processes the payment run in the system.
  - Invoice and billing documents will automatically clear in MAGIC leaving no outstanding open items for either the Billing Agency or the Customer Agency.

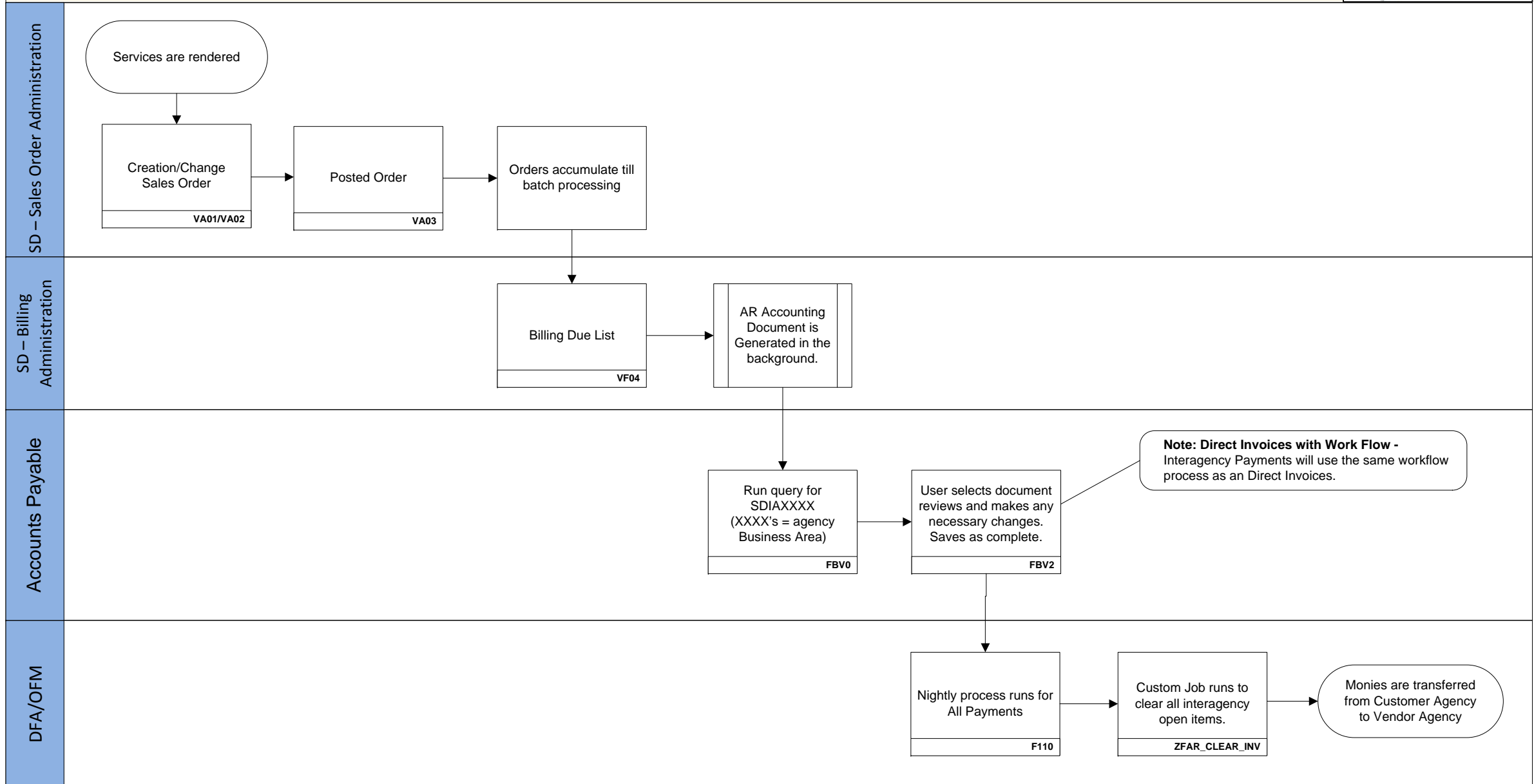
# External Invoice through S&D (Process to Invoice/Bill)



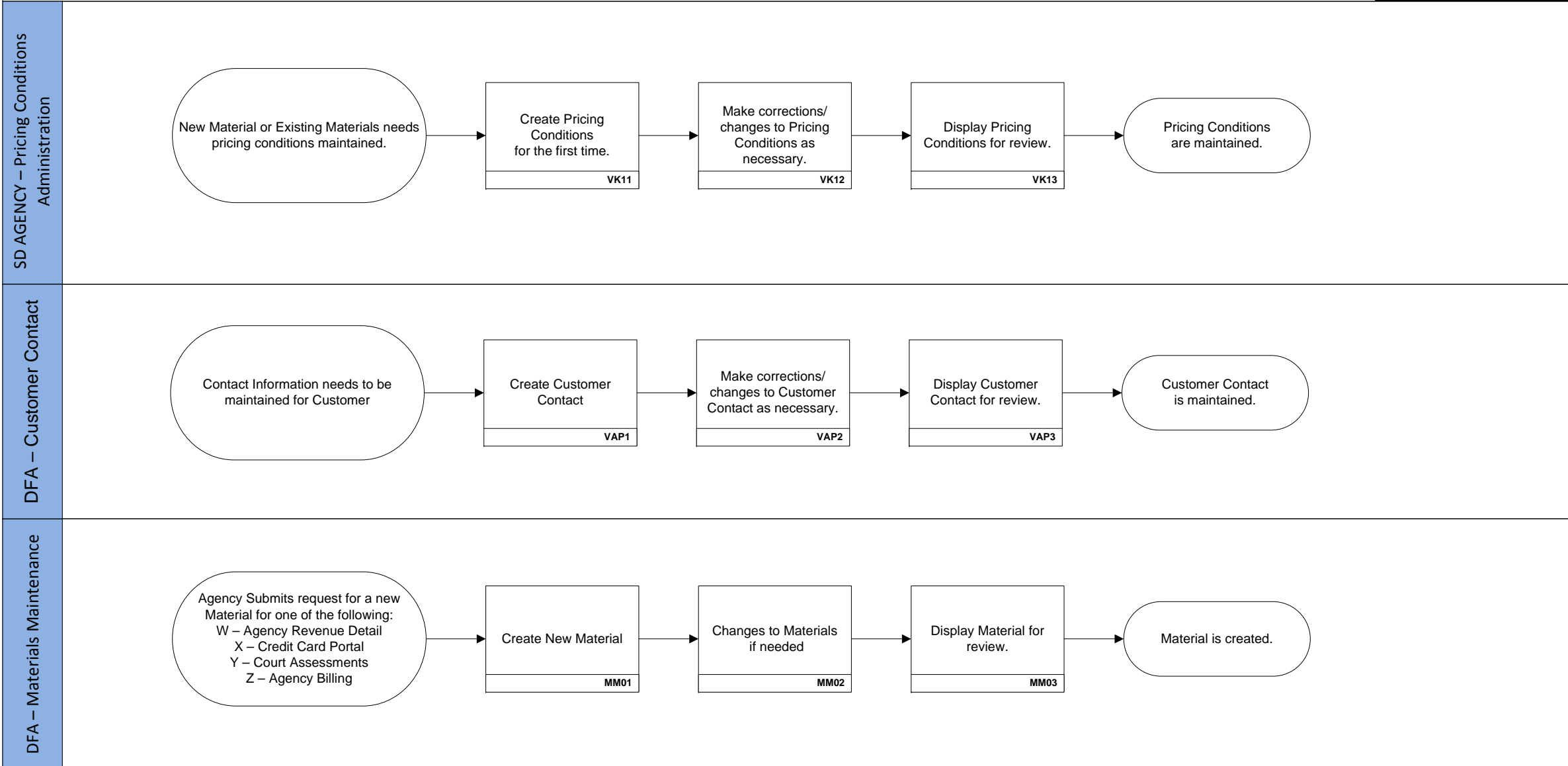
# External Invoice through S&D (AR process to Receive)



# Inter-Agency Invoice through Sales and Distribution



# Sales and Distribution – Master Data Maintenance



# Cost Allocations & Distributions

