



## ZFGL\_JV\_INTF\_Load Parked Documents from a File

### Work Instruction

Transaction Code(s): ZFGL\_JV\_INTF

#### **Purpose**

Use this procedure to upload parked documents from a file.

#### **Trigger**

Perform this procedure when parked documents should be uploaded from a text (tab delimited) file.

#### **Menu Path**

None

#### **Transaction Code**

ZFGL\_JV\_INTF

#### **Helpful Hints**

The text file (saved from Excel template as a text, tab delimited file) must be completed and saved.  
The file must be closed for the transaction to work.



# ZFGL\_JV\_INTF\_Load Parked Documents from a File

## Work Instruction

Transaction Code(s): ZFGL\_JV\_INTF

### Procedure

1. Start the transaction using the menu path or transaction code.

#### Load Park Documents from Tab delimited file

2. Click Presentation Server radio button .
3. As required, complete/review the following fields:

Field	R/O/C	Description
Input Filename	Required	<b>File name that identifies the file to be uploaded.</b> <b>Example:</b> C:\Inputfile.txt

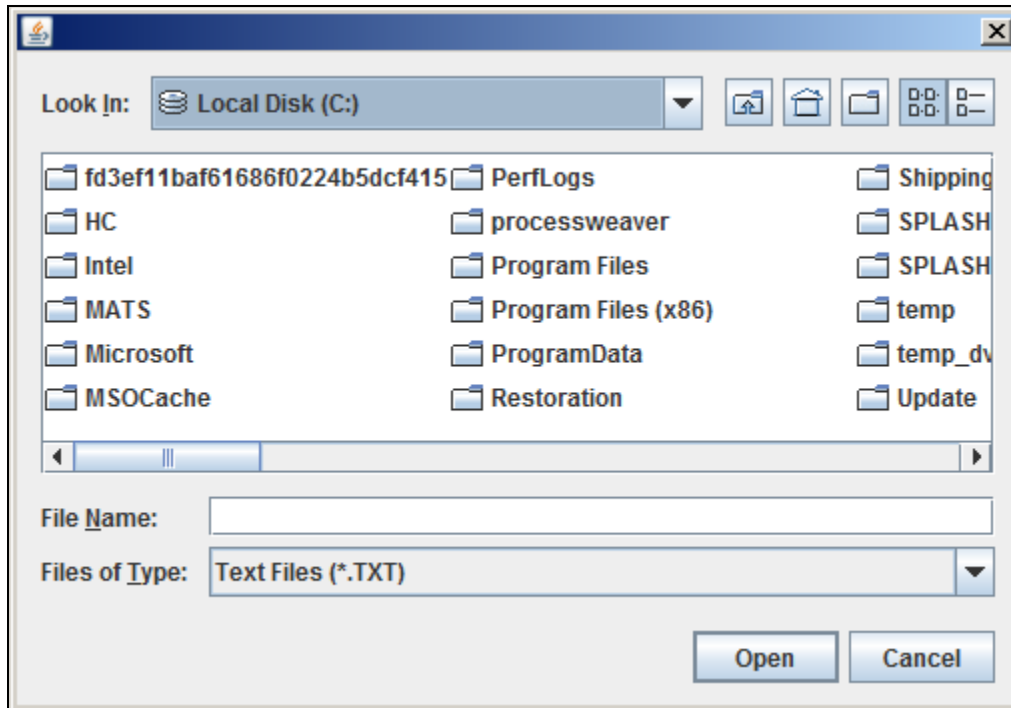
4. Click Search button  to locate the file.



# ZFGL\_JV\_INTF\_Load Parked Documents from a File

## Work Instruction

Transaction Code(s): ZFGL\_JV\_INTF

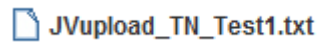


5. Navigate the Look In: drop-down menu

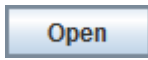


to select the directory for the upload file.

6. Select the tab delimited text file to upload, for example



7. Click Open button





# ZFGL\_JV\_INTF\_Load Parked Documents from a File

## Work Instruction

Transaction Code(s): ZFGL\_JV\_INTF

### Load Park Documents from Tab delimited file

8. Click Execute button **Execute** to start the upload.

### Security warning

9. A security message may be displayed. If needed, click check box  not only for this session, but always.
10. A security message may be displayed. If needed, click check box  not only for this file, but for all files of directory:



# ZFGL\_JV\_INTF\_Load Parked Documents from a File

## Work Instruction

Transaction Code(s): ZFGL\_JV\_INTF

11. Click Yes button 



If errors occur, correct the errors in the tab delimited text file, save and close the file, and repeat all of the above steps.

### Load Park Documents from Tab delimited file

**Load Park Documents from Tab delimited file**

Menu

ZFGL\_JV\_INTF State of Mississippi Page: 1  
ZFGLII\_LOAD\_PARK\_DOCUMENTS Create Park Documents from Tab-delimited File 01/27/2014 16:57:25

Parked Document Load Results for File: C:\JVupload\_TN\_Test1.txt

Total Number of Park Documents	-	2
Total Successful Documents	-	0
Total Failed Documents	-	2
Total Number of Items	-	2
Total Successful Items	-	0
Total Failed Items	-	2

Doc Type	Posting Date	Reference	Header text	Status
DR	8/28/2013	TN - Test 1	50	Failed with Item error - Amount in Document Currency is a Required Field
DR	8/28/2013	TN - Test 1	40	Failed with Item error - Account is a Required Field

Output File Download Results

No records to download in file C:\Success.txt

File: C:\Error.txt is successfully downloaded

3.012 bytes transmitted, code page 0000 SAP TEA (100) mpteaci

12. Click Back button  to return to the previous screen.

13. Click Exit button  to leave the transaction.



## ZFGL\_JV\_INTF\_Load Parked Documents from a File

### Work Instruction

Transaction Code(s): ZFGL\_JV\_INTF

#### Result

You have successfully uploaded parked documents from a file.